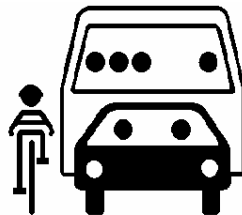


# Washtenaw Area Transportation Study: Federal Obligated Improvements FY 2009



December 2009



Washtenaw Area Transportation Study ♦ 705 N Zeeb Road ♦ Ann Arbor, MI 48103  
Phone (734) 994-3127 ♦ Fax (734) 994-3127 ♦ [www.miwats.or](http://www.miwats.or)

## **POLICY COMMITTEE**

Chair: Jim Carson, Village of Dexter

Vice-chair: Pat Kelly, Dexter Township

Secretary/Treasurer: Carsten Hohnke, City of Ann Arbor

Mike Moran	Ann Arbor Township
Jesse Bernstein	Ann Arbor Transportation Authority
Jason Lindauer	City of Chelsea
John Donegan	Eastern Michigan University
Pamela Boyd	Michigan Department of Transportation
Deb Mozurkewich	Northfield Township
Mandy Grewal	Pittsfield Charter Township
Gretchen Driskell	City of Saline
Nancy Hedberg	Scio Township
Ron Mann	Southwest Washtenaw Council of Governments
Bill McFarlane	Superior Charter Township
Hank Baier	University of Michigan
Wes Prater	Washtenaw County Board of Commissioners
Doug Fuller	Washtenaw County Road Commission
William Nickels	City of Ypsilanti
Brenda Stumbo	Ypsilanti Charter Township

Ex officio Members:

Chris Dingman	Federal Highway Administration
Carmine Palombo	Southeast Michigan Council of Governments

### **Staff:**

Terri Blackmore	Executive Director
Ryan Buck	Senior Transportation Planner
Eric Bombery	Associate Transportation Planner
Nick Sapkiewicz	Associate Transportation Planner
Sarah Pressprich	Intern
Mike Limoges	Intern

## TABLE OF CONTENTS

Introduction.....	1
Background.....	1
WATS Involvement.....	1
Long Range Plan.....	2
Transportation Improvement Program.....	2
Public Involvement.....	2
Annual Obligated Improvements Summary.....	4
Funding Sources.....	4
Types of Improvements.....	6
Project Location.....	7

## CHARTS, TABLES, AND MAPS

Chart 1: Federal Funding Process.....	3
Table 1: Federal Obligations by Funding Source.....	5
Table 2: Federal Obligations by Improvement Type.....	6
Map 1: Federal Obligation Improvements.....	8
Map 2: Federal Obligation Improvements, by Project Type.....	9
Table 3: List of Federally Obligated Projects Washtenaw County.....	11

The preparation of this document was financed through grants from the U.S. Department of Transportation in cooperation with the Michigan Department of Transportation and contributions from local government, public transit and educational unit members of the Washtenaw Area Transportation Study.

## **Introduction**

Federal Law, under the Safe, Accountable, Flexible, Efficient Transportation Equity Act: A Legacy for Users (SAFETEA), requires the Washtenaw Area Transportation Study (WATS) to publish a listing of improvements using federal funds obligated in the previous federal fiscal year, October 1, 2008 to September 30, 2009. The listing is intended to increase the public awareness of government spending on transportation improvements. This document is available for download on the WATS website at <http://www.miwats.org> under “Programs and Plans”

The Federal Highway Administration (FHWA) defines obligation as the federal government’s legal commitment to pay or reimburse the states or other entities for the federal share of a project’s eligible costs. Obligation of federal funds means that a project has received federal commitment for reimbursement, and does not necessarily mean that the project was initiated or completed in that year or indicate the total cost of that project. Projects eligible for federal aid are not typically fully covered by the federal government. A majority of the federal aid projects consist of 80% federal funds and a 20% match by State or local source.

## **Background**

The Washtenaw Area Transportation Study (WATS) is an association of 21 local governments, transit agencies, and educational institutions promoting regional perspective and addressing issues through cooperative government action. WATS continually monitors the current condition of the county’s transportation system, including roads, bicycle and pedestrian paths, bridges, and public transit. Every five years, WATS and its members produce a long-range transportation plan for the region looking 25 years into the future. Annually, WATS establishes transportation improvement priorities.

## **WATS Involvement**

WATS guides the expenditure of state and federal transportation funds in Washtenaw County through a committee process. WATS represents the perspectives of its local government members, while coordinating its planning efforts with the Michigan Department of Transportation (MDOT), the Southeast Michigan Council of Governments (SEMCOG) the Federal Highway Administration (FHWA), and the Federal Transit Administration (FTA). WATS develops its positions by working with elected officials, staff from local governments, the above agencies, and the public through a committee system where the various issues are discussed and recommendations made.

Agencies that are eligible for federal transportation funds include Ann Arbor Transportation Authority (AATA), Rural Transit Providers (Western Washtenaw Area Value Express, People’s Express, and Manchester Senior Services), City of Ann Arbor, City of Chelsea, City of Milan, City of Saline, City of Ypsilanti, Village of Dexter, Village of Manchester, and Washtenaw County Road Commission (WCRC). WATS works with local elected officials and technical staff from local governments to guide the expenditure of state and federal transportation funds.

The WATS committees discuss local issues and make recommendations providing the basis of the federal aid process. WATS Federal Aid Committees (Rural and Urban) meet as called to develop multi-year programs that determine where federal dollars will be spent. The WATS Technical Committee, comprised of local planners and engineers, reviews and makes recommendations to the Policy Committee on the draft federal program. The WATS Policy Committee, comprised of local elected officials, approves all federal aid programs. Technical and Policy Committees meet monthly, with Technical Committee on the first Wednesday and Policy Committee on the third Wednesday.

All WATS Committee meetings are open to the public with comment periods available. For meeting times and agendas, visit the WATS website at [www.miwats.org](http://www.miwats.org).

### **Long Range Plan**

As the agency responsible for transportation planning for Washtenaw County, WATS and its participating agencies develop the area's long range transportation plan. The WATS Policy Committee adopted the 2035 Transportation Plan for Washtenaw County (2035 Plan) on September 16, 2009 and incorporated it into the Southeast Michigan Council of Government's regional plan on October 22, 2009. WATS developed the 2035 Plan with extensive involvement by the public.

The 2035 Plan specifies a detailed set of investments and strategies throughout the county, prioritized in five year periods, from 2010 through 2035 to maintain, manage, and improve the surface transportation network. Updated every four years to reflect new planning priorities and changing projections of growth and travel demand, the long-range transportation plan must be based on a realistic forecast of future revenues. As noted above, this obligation report is limited to federal funds and does not include all revenues expended on transportation in a given year.

The WATS 2035 Plan lists capacity improvements in detail in both the WATS 2035 Plan and SEMCOG's Regional Transit Plan (RTP). Only projects consistent with the 2035 Plan's financially constrained are listed in the Transportation Improvement Plan for federal funding (see next section). WATS staff review proposed federally funded improvement amendments, ensuring that each project is listed in the current long range transportation plan. WATS approves 2035 Plan amendments one to three times per year in accordance with SEMCOG's RTP amendment cycle.

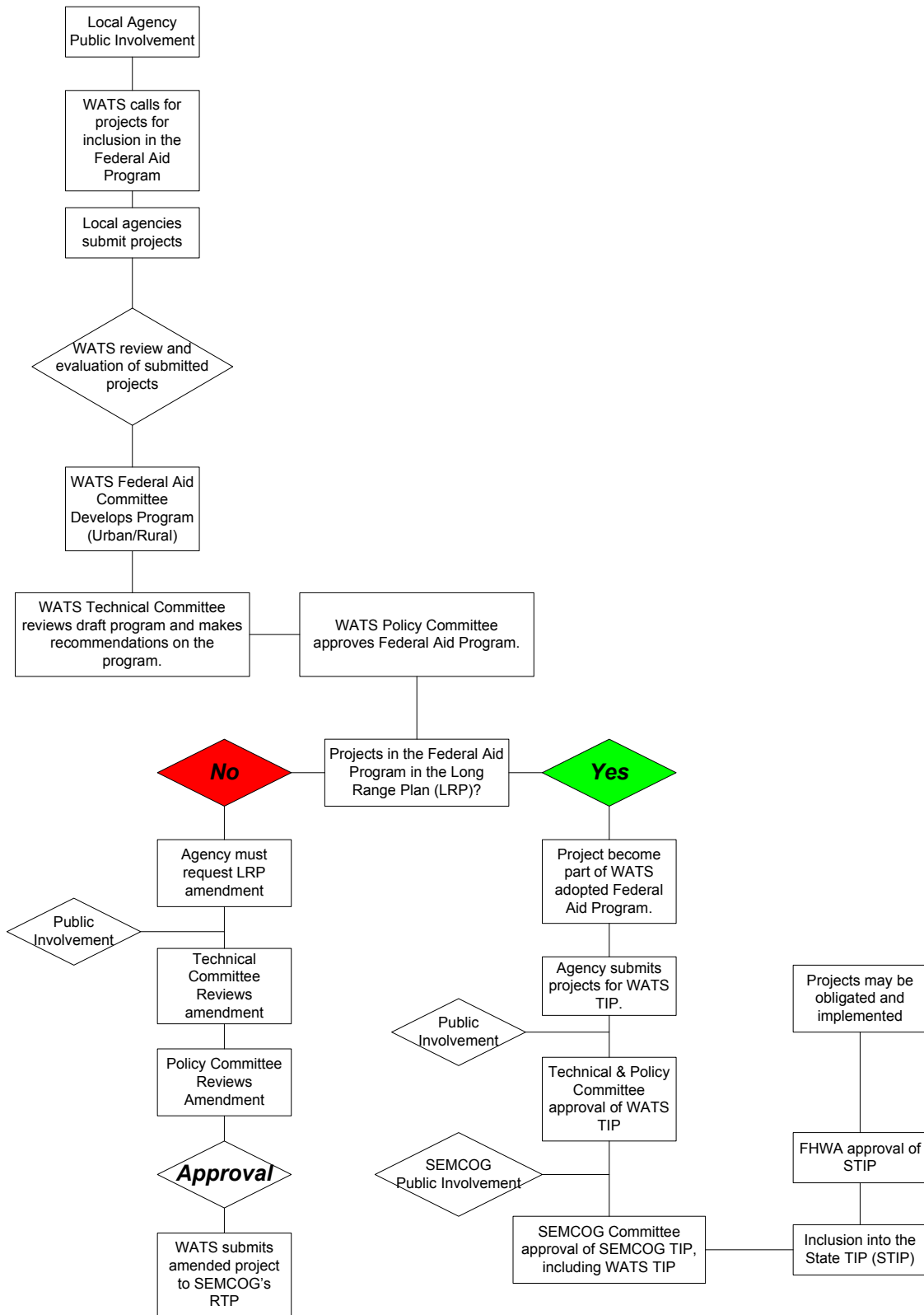
### **Transportation Improvement Program**

In addition to the long range transportation plan, the federal government also requires a shorter-term transportation programming document, the Transportation Improvement Program (TIP). The TIP includes the adopted list of all Washtenaw County public transit, roadway, bicycle, pedestrian, safety, and congestion improvements that will receive federal transportation funds in the near future. Local agencies that request improvements using federal funds must submit the improvements for amendment into both the TIP and the 2035 Plan. WATS prepares and adopts the TIP at least every four years and prioritizes the list of projects grouped by year. The TIP must be financially constrained and open to public comment prior to WATS, SEMCOG, Michigan Department of Transportation, and Federal Highway Administration approval. The Federal Highway Administration gave final approval of the 2008-2011 TIP on November 17, 2008. On the following page, Chart 1 presents the approval process in detail.

### **Public Involvement**

WATS works to proactively engage the public in the regional transportation planning process and embraces federal requirements that planning agencies provide the public with complete information, timely public notice, full public access to key decisions, and early and continuing involvement in developing the Long Range Plan, TIP, and other products. WATS' public involvement strategies include presenting information at meetings, on the web, and in a quarterly newsletter. WATS educates the public, continually soliciting public input, facilitating information flow between the public and decision makers, while considering and responding to public concerns.

**Chart 1: Federal Funding Process**

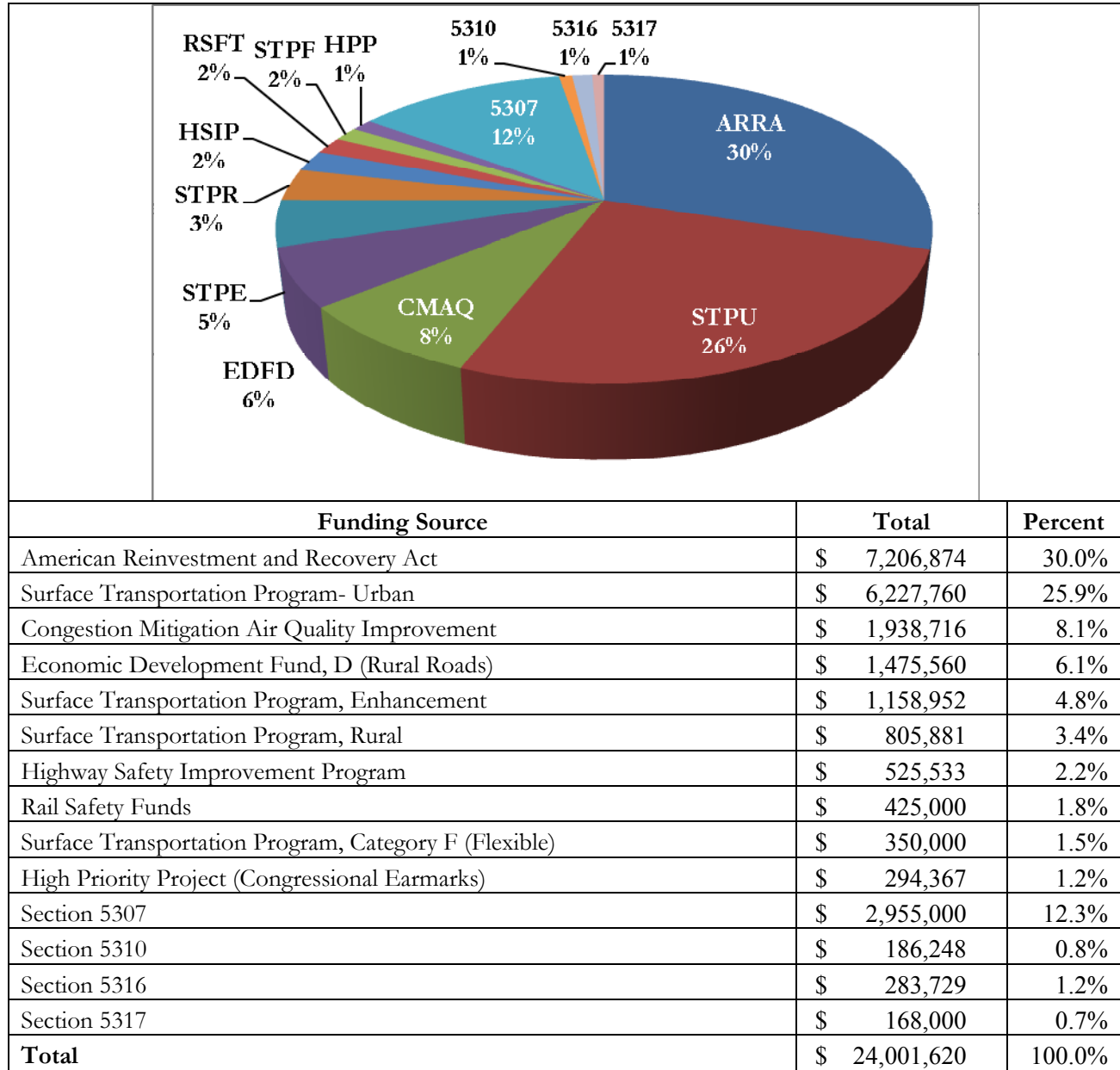


## **Annual Obligated Improvements Summary**

### **Funding Sources**

This annual listing shows that \$24.0 million of federal funds were obligated in Washtenaw County for highway, local road, bicycle and pedestrian facilities, transportation enhancement, public transit and safety projects. Of this amount, \$8.5 million were obligated from the Surface Transportation Programs: \$6.2 million for Urban programs, \$1.2 million for Enhancement programs, \$805 thousand for Rural programs, and \$350 thousand for Flexible programs. A significant amount of obligated funding came from the American Reinvestment and Recovery Act (commonly referred to as the “Stimulus package”) at \$3.1 million. ARRA funds paid for preventative maintenance projects and installation of a modern roundabout at Nixon and Huron Parkway in Ann Arbor. Congestion Mitigation Air Quality provided \$1.9 million of funds for transit improvements at the Ann Arbor Transportation Authority. Economic Development and STP Rural funds contributed \$1.9 million of funds to a road reconstruction project in Augusta Township. The Highway Safety Improvement Program provided \$525 thousand for non-motorized improvements. Rail Safety Funds provided \$425 thousand for crossing improvements. Lastly, High Priority Projects (Congressional Earmarks), contributed \$294 thousand for the Platt Road Greenway in Pittsfield Township. Table 1 depicts federal obligations break down by fund.

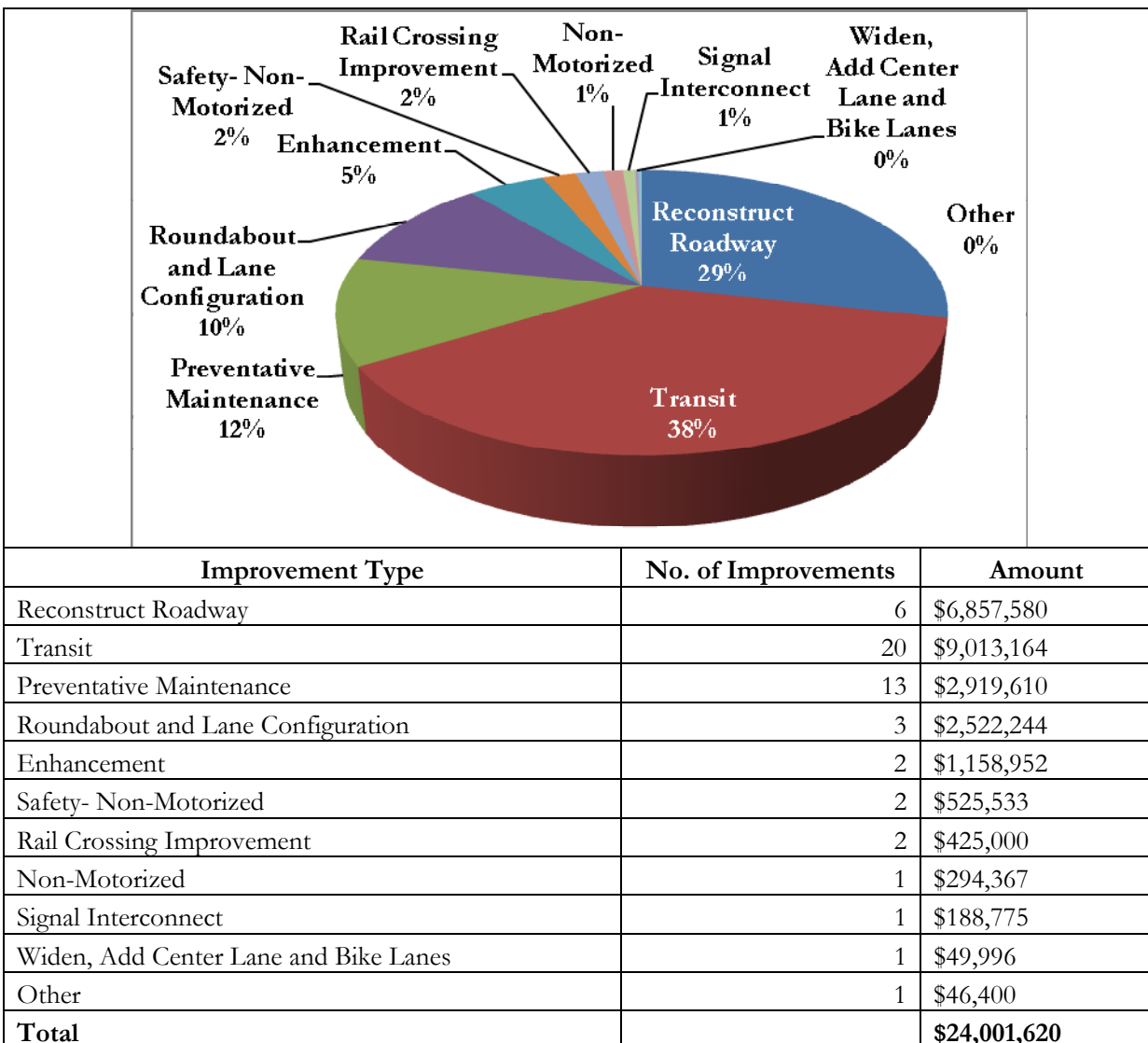
**Table 1: Federal Obligations by Funding Source**



## Types of Improvements

The most common improvement type receiving federal obligated funds was 4.0 miles of roadway reconstruction, at \$6.9 million. Preventative maintenance projects, such as road resurfacing, covered over 40.6 miles, and received \$2.9 million. Lane reconfiguration and installation of roundabouts at Nixon and Huron Parkway in Ann Arbor and at Whittaker and Stony Creek, in Ypsilanti Township received \$2.5 million in federal obligated funds and spanned 1.5 miles. The AATA received \$1.2 million for transit improvements. Enhancement improvements, non-motorized improvements, and non-motorized safety projects were funded at covered over 3.5 miles and received just under \$2.0 million in federal funds. Two rail crossings in Augusta Township were improved with \$425 thousand of federal funds. A project to interconnect the traffic signals along Packard spanned 1.4 miles and received \$188 thousand in federal funds. A project that widened a 2.4 mile stretch of Baker added center and bicycle lanes received just under \$50 thousand. Lastly, \$46 thousand contributed to new traffic counters for the area. Chart and Table 2 show all federal obligations in the Washtenaw Area by project type.

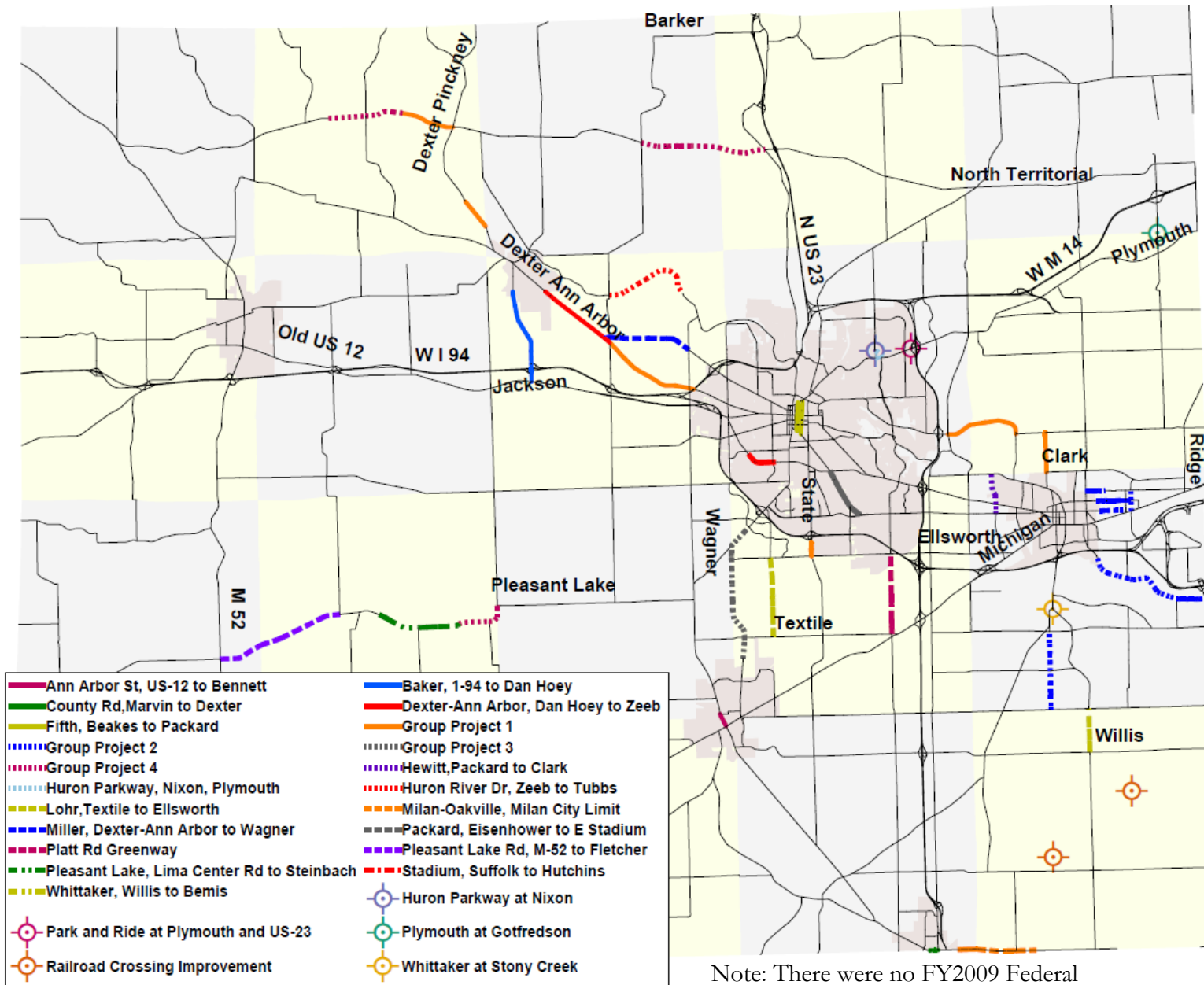
**Table 2: Federal Obligations by Improvement Type**



## **Project Location**

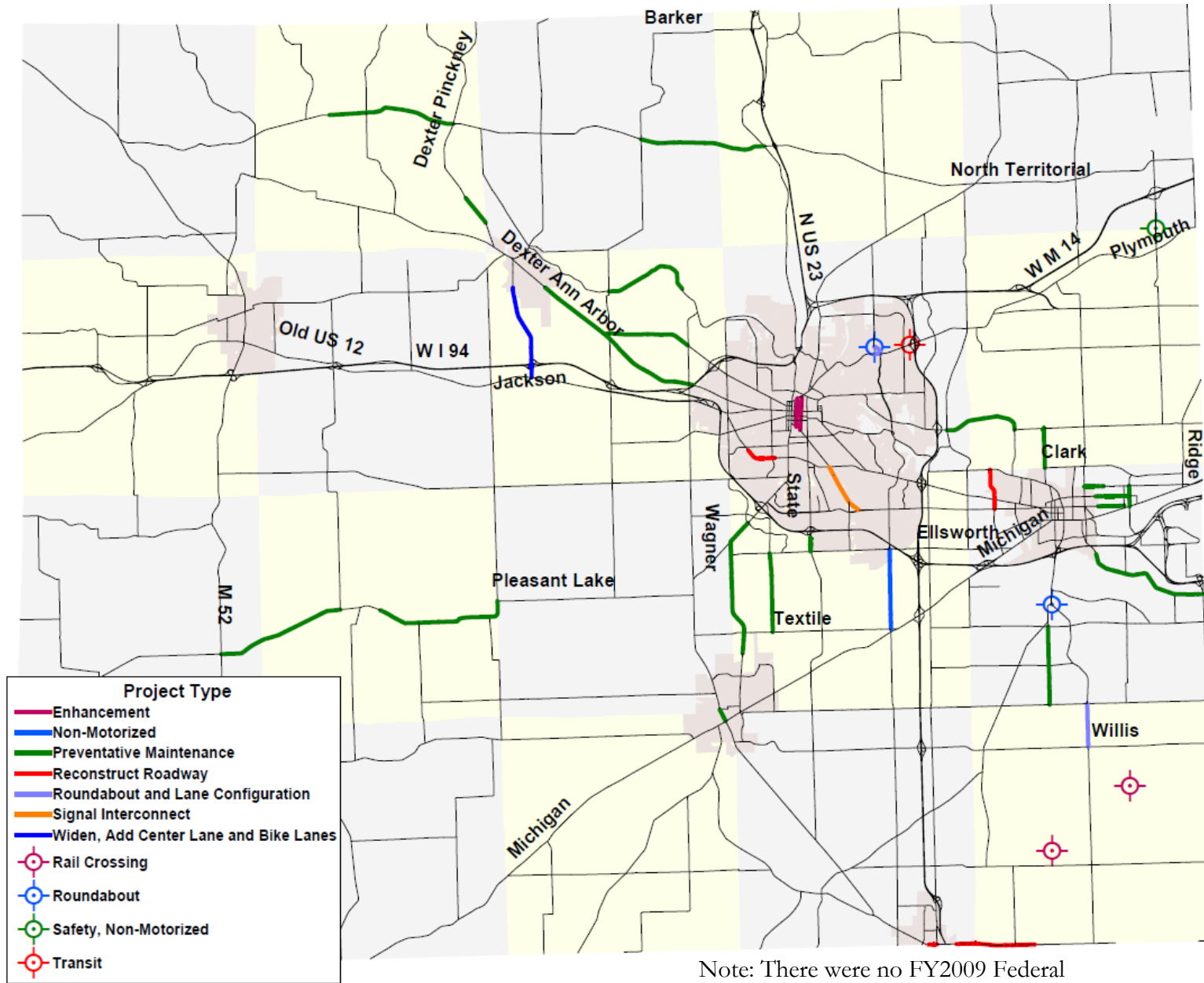
Map 1 on the following page depicts all location-specific federally obligated projects. Map 2 groups these projects by type. Note there were no location-specific improvements or projects in southwest Washtenaw County.

Map 1: Federal Obligation Improvements



Note: There were no FY2009 Federal Obligated Projects in SW Washtenaw

Map 2: Federal Obligation Improvements, by Project Type



Note: There were no FY2009 Federal Obligated Projects in SW Washtenaw



Table 3: List of Federally Obligated Projects Washtenaw County

Funding Source	Agency	Locality	Description & Comments	Obligation Amount	Date	Type
5307	AATA	Service Area	Purchase passenger shelters, hardware/software, security cameras, and bus components; capital cost of subcontracted service; preventive maintenance; and planning	\$ 2,955,000	9/30/09	Transit
5316	AATA	Service Area	Mobility management	\$ 125,000	9/30/09	Transit
5317	AATA	Service Area	Mobility management	\$ 60,000	9/30/09	Transit
ARRA	AATA	Service Area	Improve bus stops	\$ 160,000	5/11/09	Transit
ARRA	AATA	Service Area	Park and Ride lot at Plymouth and US-23	\$ 1,500,000	5/11/09	Transit
ARRA	AATA	Service Area	Purchase 4 buses	\$ 2,500,000	5/11/09	Transit
CMAQ	AATA	Service Area	Flex AATA hybrid buses to FTA	\$ 1,035,187	7/28/09	Transit
CMAQ	AATA	Service Area	Washtenaw Rideshare	\$ 225,000	6/9/09	Transit
ARRA	Ann Arbor	Ann Arbor	Packard, Eisenhower to E Stadium	\$ 188,775	9/21/09	Signal Interconnect
CMAQ	Ann Arbor	Ann Arbor	Huron Parkway at Nixon Rd	\$ 678,529	3/20/09	Roundabout and Lane Configuration
HSIP	Ann Arbor	Ann Arbor	Citywide Ped Improvements (Forty-five locations)	\$ 166,373	5/7/09	Safety- Non-Motorized
STPE	Ann Arbor	Ann Arbor	Fifth, Beakes to Packard AND Division, Packard to Detroit	\$ 983,952	6/2/09	Enhancement
STPU	Ann Arbor	Ann Arbor	Replace traffic counters	\$ 46,400	8/31/09	Other
STPU	Ann Arbor	Ann Arbor	S Huron Pkwy, Plymouth to Nixon AND Nixon, Plymouth to Huron	\$ 737,493	3/18/09	Roundabout and Lane Configuration
STPU	Ann Arbor	Ann Arbor	W Stadium, Suffolk to Hutchins	\$ 3,608,366	9/16/09	Reconstruct Roadway
STPF	Milan	Milan	County St, Marvin St to Dexter St	\$ 350,000	2/26/09	Reconstruct Roadway
5310	People's Express	Service Area	Computer equipment	\$ 2,400	9/30/09	Transit
5310	People's Express	Service Area	One small bus	\$ 62,260	9/30/09	Transit
5316	People's Express	Service Area	Mobility Management	\$ 48,000	9/30/09	Transit
5316	People's Express	Service Area	Service operations	\$ 62,729	9/30/09	Transit
5317	People's Express	Service Area	Mobility management	\$ 30,000	9/30/09	Transit
5317	People's Express	Service Area	Service operations	\$ 30,000	9/30/09	Transit
5317	People's Express	Service Area	Two vans with lifts	\$ 48,000	9/30/09	Transit
ARRA	Saline	Saline	Ann Arbor St, US-12 to Bennett	\$ 188,775	5/21/09	Preventative Maintenance
5310	WAVE	Service Area	Computers	\$ 4,000	9/30/09	Transit
5310	WAVE	Service Area	Office furniture	\$ 6,000	9/30/09	Transit
5310	WAVE	Service Area	One conversion mini-van	\$ 35,148	9/30/09	Transit
5310	WAVE	Service Area	Two conversion vans with lifts	\$ 76,440	9/30/09	Transit
5316	WAVE	Service Area	Mobility Management	\$ 48,000	9/30/09	Transit
ARRA	WCRC	Areawide	Group Project 1: beginning with Dexter Ann Arbor Road	\$ 1,119,324	7/29/09	Preventative Maintenance
ARRA	WCRC	Areawide	Group Project 2: beginning with Cross from Ypsi CL to Harris	\$ 27,220	7/29/09	Preventative Maintenance
ARRA	WCRC	Areawide	Group Project 3: beginning with Ann Arbor Saline & Maple	\$ 82,598	8/4/09	Preventative Maintenance
ARRA	WCRC	Areawide	Group Project 4: beginning with North Territorial to Parker Road	\$ 617,000	7/29/09	Preventative Maintenance
ARRA	WCRC	Pittsfield Twp	Lohr, Textile to Ellsworth	\$ 43,026	7/29/09	Preventative Maintenance
ARRA	WCRC	Scio Twp	Baker, I-94 to Dan Hoey	\$ 49,996	8/4/09	Widen, Add Center Lane and Bike Paths
ARRA	WCRC	Scio Twp	Dexter-Ann Arbor Rd, Dan Hoey to Zeeb	\$ 48,887	8/4/09	Preventative Maintenance
ARRA	WCRC	Scio Twp	Huron R Dr, Zeeb to Tubbs	\$ 504,115	7/29/09	Preventative Maintenance
ARRA	WCRC	Scio Twp	Jackson Rd & Zeeb Rd Jackson, Honey Creek to Wagner; Zeeb, Park to I-94	\$ 117,531	7/29/09	Preventative Maintenance

Funding Source	Agency	Locality	Description & Comments	Obligation Amount	Date	Type
ARRA	WCRC	Scio Twp	Miller, Dexter-Ann Arbor Rd to Wagner	\$ 59,628	8/13/09	Preventative Maintenance
EDFD	WCRC	Augusta Twp	Milan-Oakville, Milan E CL to 0.5 mi E of Gooding	\$ 1,475,560	6/30/09	Reconstruct Roadway
HPP	WCRC	Pittsfield Twp	Platt Rd Greenway, E side from 100 ft S of Arbor Tech Ct to...	\$ 294,367	7/14/09	Non-Motorized
HSIP	WCRC	Superior Twp	Plymouth at Gotfredson	\$ 359,160	4/20/09	Safety- Non-Motorized
RSFT	WCRC	Augusta Twp	Hitchingham Rd at Norfolk Southern RR	\$ 225,000	1/12/09	Railroad
RSFT	WCRC	Augusta Twp	Judd Rd at Norfolk Southern RR	\$ 200,000	1/12/09	Railroad
STPE	WCRC	Pittsfield Twp	Platt & Bemis--Platt/Ellsworth intersection and Platt from 200 ft N	\$ 175,000	4/28/09	Enhancement
STPR	WCRC	Augusta Twp	Milan-Oakville, Milan E CL to 0.5 mi E of Gooding	\$ 694,375	6/18/09	Reconstruct Roadway
STPR	WCRC	Augusta Twp	Whittaker Rd, Willis to Bemis	\$ 19,487	8/7/09	Preventative Maintenance
STPR	WCRC	Freedom Twp	Pleasant Lake Rd, Lima Center Rd to Steinbach	\$ 34,352	8/7/09	Preventative Maintenance
STPR	WCRC	Freedom Twp	Pleasant Lake Rd, M-52 to Fletcher	\$ 57,667	8/7/09	Preventative Maintenance
STPU	WCRC	Ypsilanti Twp	Whittaker Rd at Stony Creek Rd	\$ 1,106,222	7/20/09	Roundabout and Lane Configuration
STPU	Ypsilanti	Ypsilanti	N Hewitt, Packard to Clark	\$ 499,281	4/23/09	Reconstruct Roadway
STPU	Ypsilanti	Ypsilanti	N Mansfield, Westmoreland (Congress) to Walsh	\$ 229,998	5/26/09	Reconstruct Roadway
			<b>TOTAL</b>	<b>\$ 24,001,620</b>		

## **TECHNICAL ADVISORY SUBCOMMITTEE**

Chair: David Miller, University of Michigan Saline

1<sup>st</sup> Vice-Chair: Eli Cooper, City of Ann Arbor Systems Planning

2<sup>nd</sup> Vice-Chair: Brett Lenart, Washtenaw County Office of Strategic Planning

Chris White	Ann Arbor Transportation Authority
Homayoon Pirooz	City of Ann Arbor Engineering
Chris Linfield	City of Chelsea
Rhett Gronewelt	Village of Dexter
Patrick Sloan	Dexter Township
Dieter Otto	Eastern Michigan University
Ola Williams	Michigan Department of Transportation - Lansing Planning
Kari Martin	Michigan Department of Transportation - University Region
Paul Montagno	Pittsfield Township
Gary Roubal	City of Saline
Roy Townsend	Washtenaw County Road Commission Engineering
Stan Kirton	City of Ypsilanti
Joe Lawson	Ypsilanti Charter Township

Ex officio Members:

Chris Dingman	Federal Highway Administration
Jeff Tumidanski	Southeast Michigan Council of Government

