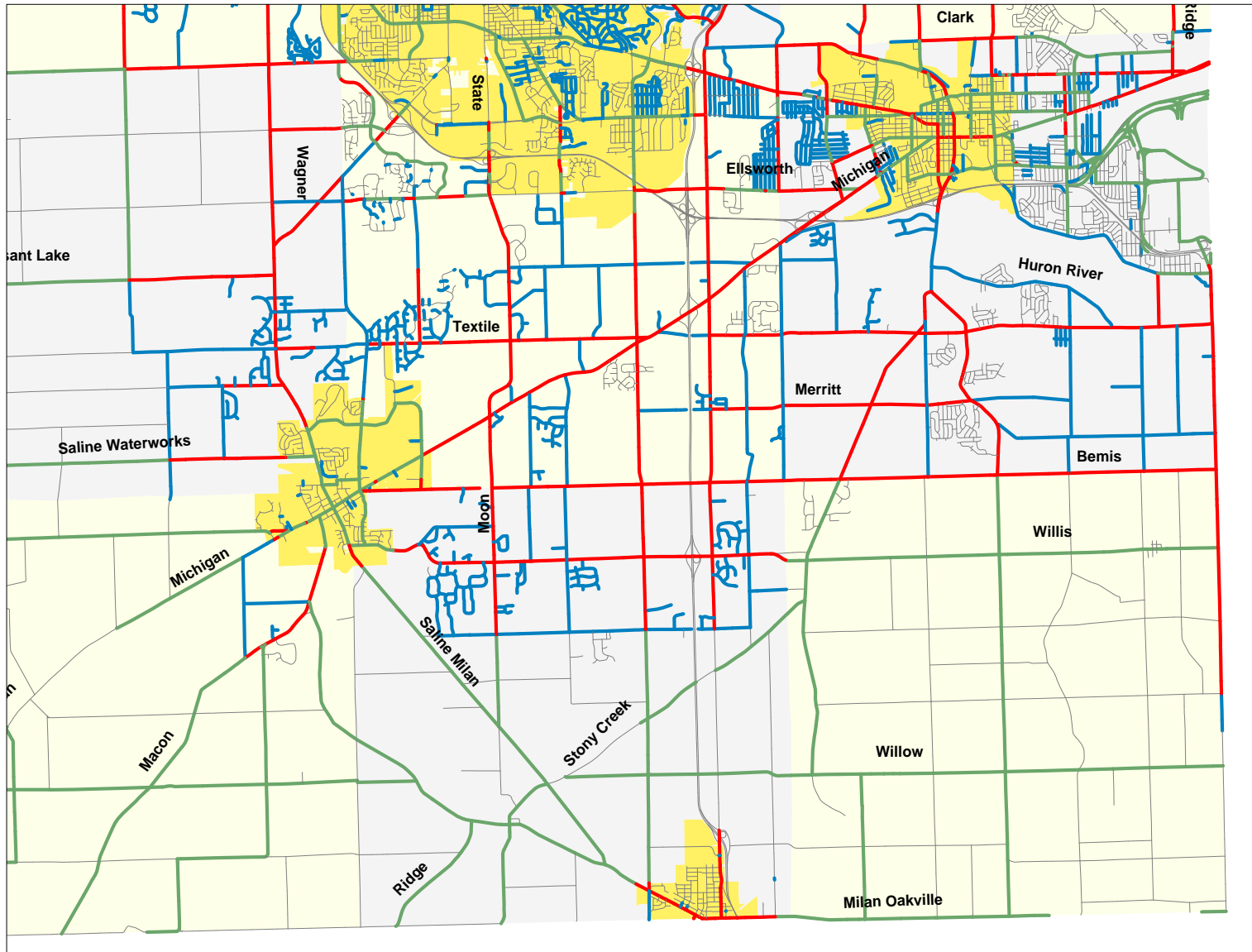


# 2035 Transportation Plan Deficiencies - Non-motorized



**Map layers**

- Roads
- Bike Deficiency
- Urban Pedestrian Deficiency
- Bike and Ped Deficiency

**Bike Deficiency - Federal Aid eligible road without a striped bike lane or wide shoulder**  
**Bike and Pedestrian Deficiency - Federal aid road in Urbanized Area with neither bike lanes nor sidewalk**  
**Pedestrian Deficiency - No sidewalk**

