



THE VEHICLE

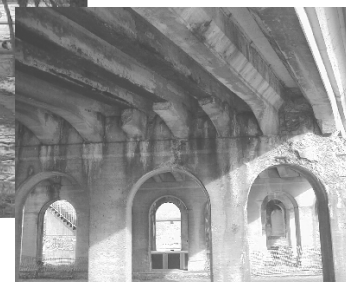
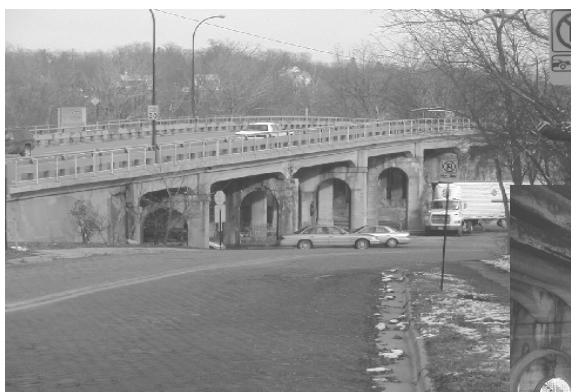
ANN ARBOR-YPSILANTI URBAN AREA TRANSPORTATION STUDY COMMITTEE

April 2001

2001 Major Construction Projects

The following table is a list of major construction projects scheduled to begin or be resumed during the 2001 construction season. The table includes the location of the project and a brief description of the type of improvements being undertaken. Also listed, is the agency or agencies responsible for the project, the estimated construction start and completion dates, project funding sources and approximate project costs. Following the table is a chart that illustrates the distribution of the construction projects by project type. A maps that shows the project locations can be found on page 6. Projects with unspecified locations are not shown on the maps.

Project Location and Improvement	Agency	Estimated Start	Estimated Completion	Funding Source	Construction Cost
<p>Broadway Bridges Reconstruction Project includes the complete demolition of the earth-filled arch bridge over the Huron River, as well as the concrete-encased, steel beam bridge over Depot Street and the Norfolk Southern Railroad Tracks. Project highlights include; the reconstruction of all approach roadways and the reconfiguration of the N. Division/Detroit St./High Street/Carey Street intersection; the reconstruction of Depot Street from Broadway to N. State Street in reclaimed brick pavers; installation of ornamental lighting; numerous site improvements; and, the detouring of outbound traffic for the course of the project's construction. One lane of inbound traffic will be maintained along Broadway throughout the project's construction. Project detours will be posted.</p>	City of Ann Arbor	Fall/Winter 2001	Spring/ Summer 2004	Critical Bridge, STPU, Local	\$15,800,000
<p>2000 Annual Street Resurfacing Project includes sections of 44 streets this year. (For a complete list of streets turn to page 9.)</p>	City of Ann Arbor	April	November	Local	\$3,500,000
<p>2000 Downtown Resurfacing Project includes resurfacing sections of 9 streets this year. (For a complete list of streets turn to page 8.)</p>	City of Ann Arbor	May	October	Local	\$1,100,000
<p>Nixon Road Improvements includes the reconstruction of Nixon Road from Haverhill northerly to Green Road, and the paving of the gravel portion of Nixon Road from Green Road northerly to the bridge over M-14.</p>	City of Ann Arbor	August	October	Local	\$1,155,000



Project Location and Improvement	Agency	Estimated Start	Estimated Completion	Funding Source	Construction Cost
Packard Street Reconstruction Project will include the reconstruction of Packard Street between South State Street and East Stadium Boulevard.	City of Ann Arbor	May	September	STPU, Local	\$2,193,000
State/Ellsworth & Ellsworth/Varsity Intersection Improvements includes widening southbound South State Street to allow dual left-turn lanes onto Ellsworth Road, adding a right-turn lane onto westbound Ellsworth Road at Varsity Drive, and the construction of a paved bus stop at the Ellsworth and Varsity intersection.	City of Ann Arbor	July	September	CMRP, Local, Private	\$408,000
Huron Parkway/Washtenaw Avenue Intersection Improvements , the completion of this project began last year, which includes road widening at Huron Parkway, south and north of Washtenaw to build dual left-turn lanes from Huron Parkway onto Washtenaw.	City of Ann Arbor	April	June	CMAQ, Local	\$990,000
Stadium Boulevard and Fuller Road Guardrail Improvements Project includes the repair and/or installation of guardrails in the vicinity of the Stadium Boulevard Bridge over the Norfolk Southern Railroad, the Stadium Boulevard Bridge over South State Street, and the Fuller Road Bridges over the Huron River.	City of Ann Arbor	August	September	Local	\$65,000
S. Ann Arbor , from US-12 to Willis, pavement reconstruction and water main replacement.	City of Saline	May 2001	May 2002	Bond	\$575,000
E. Henry , from Ann Arbor to Old Creek, pavement reconstruction and water main repairs.	City of Saline	May 2001	May 2002	Bond	\$435,000
Spring , from Clark to Detroit, pavement reconstruction and water main replacement.	City of Saline	May 2001	May 2002	Bond	\$165,000
Detroit , from Harris to E. End, pavement reconstruction and water main replacement.	City of Saline	May 2001	May 2002	Bond	\$265,000
Davenport N. & S. , from Detroit to S. End, pavement reconstruction and water main replacement	City of Saline	May 2001	May 2002	Bond	\$265,000
Pleasant Ridge Drive , from Ann Arbor to Old Creek, pavement reconstruction and water main replacement.	City of Saline	May 2001	May 2002	Bond	\$150,000
Harper Boulevard , from Ann Arbor to Lambkins, pavement reconstruction.	City of Saline	May 2001	May 2002	Bond	\$55,000
Sauk Trail Court , from E. Terminal to W. End, construct new street and utilities.	City of Saline	May 2001	May 2002	Bond	\$560,000

Project Location and Improvement	Agency	Estimated Start	Estimated Completion	Funding Source	Construction Cost
Pleasant Ridge Court , from Old Creek to E. End, includes pavement reconstruction and water main replacement.	City of Saline	May 2001	May 2002	Bond	\$50,000
Chandler , from Nichols to E. End, pavement reconstruction.	City of Saline	May 2001	May 2002	Bond	\$80,000
Whitlock , from US-12 to E. End, pavement reconstruction and water main replacement.	City of Saline	May 2001	May 2002	Bond	\$115,000
Monroe , from PCF Drive to S. Terminal, pavement reconstruction . This includes the bridge deck and south approach.	City of Saline	May 2001	May 2002	Bond	\$35,000
Maple Road , from US-12 to Maplewood, pavement and water main repairs design engineering.	City of Saline	June	December	Bond	\$100,000
Congress , from Mansfield to Michigan, pavement reconstruct and resurface.	City of Ypsilanti	Fall 2001	Spring 2002	Local, STPU	\$360,000
I-94 Interchange Landscaping	City of Ypsilanti	Spring	Summer	Enhancement, Local	\$316,000
Michigan Avenue Median , construction of a median on Michigan Avenue from Huron River to west of Hamilton.	City of Ypsilanti	Spring	Summer	Enhancement, MDOT, Local	\$560,000
Rawsonville Road , from Textile Road to I-94 south Service Drive, complete pavement reconstruction and construction of a five-lane concrete roadway with curb and gutter, and drainage improvements.	Washtenaw County Road Commission	April	November	Federal, State, Wayne CRC and WCRC	\$3,000,000
Whittaker at Textile , includes traffic light installation, pavement resurface, and construction of left turn lanes.	Washtenaw County Road Commission	January	August	Developer, WCRC	\$800,000
Jackson Road , from Myrtle Road to Honey Creek Bridge, will be reconstructed with a four-lane boulevard with curb and gutter, also drainage improvements.	Washtenaw County Road Commission	July 2001	September 2002	High Priority, State, Scio DDA, WCRC	\$700,000
Huron Street at James L. Hart Parkway includes traffic light installation and roadway resurface.	Washtenaw County Road Commission	July	November	Federal, State, Developer, WCRC	\$400,000
Packard Road , City limits to Golfside, pavement resurface.	Washtenaw County Road Commission	July	October	Federal, State, Ypsilanti, WCRC	\$300,000
Wagner at Liberty Intersection , 1000 ft on each leg, includes traffic light installation, pavement construction, construction of a left turn lane, and installation of curb and gutter.	Washtenaw County Road Commission	August	November	Federal, WCRC	\$1,000,000

Project Location and Improvement	Agency	Estimated Start	Estimated Completion	Funding Source	Construction Cost
Ann Arbor-Saline at Waters , add dual left turn lanes on Ann Arbor-Saline Rd., and resurface intersection.	Washtenaw County Road Commission	April	August	Federal, State, Township, Developer, WCRC	\$900,000
Judd Road Bridge , replace existing bridge over the Ann Arbor Railroad and road approach work.	Washtenaw County Road Commission	September 2001	June 2002	Federal, State, WCRC	\$1,000,000
Rawsonville Road , from Textile Road to I-94 south Service Drive, complete pavement reconstruction and construction of a five-lane concrete roadway with curb and gutter, and drainage improvements.	Washtenaw County Road Commission	April	November	Federal, State, Wayne CRC, WCRC	\$3,000,000
Packard at Golfside , upgrade traffic signal.	Washtenaw County Road Commission	March	July	Federal, State, WCRC	\$200,000
US-23 , from M-14 to Silver Lake Road, mill and resurface.	MDOT	May	June	M	\$1,400,000
I-94 , under Jackson Road WB, steel repair, paint, and overlay.	MDOT	May	August	Bridge	\$388,000
I-94 , at Ann Arbor/Saline Road and State Street Interchanges, widening for dual left-lane turns – I-94 EB & WB off-ramps.	MDOT	April	September	CMAQ	\$1,500,000
US-12 BR , I-94 northerly to Michigan Avenue, concrete patching, joint resealing.	MDOT	August	End of 2001	M	\$207,000
US-12 BR , East Michigan Avenue over Conrail Railroad, deck replacement, paint beams, structure repair, road approach work.	MDOT	March	August	Bridge	\$1,971,000
I-94 , East Junction of US-12 to Washtenaw/Wayne County Line, full concrete pavement repairs.	MDOT	June	July	M	\$200,000
US-12 BR/M-17 , Hamilton to Huron, brick median and streetscape .	MDOT	April	June	TEA	\$700,000

A Guide to the Funding Sources

Some of the federal funding sources include: Critical Bridge, Surface Transportation Program –Urban or Rural funds (STPU or STPR), Congestion Mitigation/Air Quality (CMAQ), Enhancement, High Priority Projects, and Transportation Equity Act of the 21st Century (TEA)

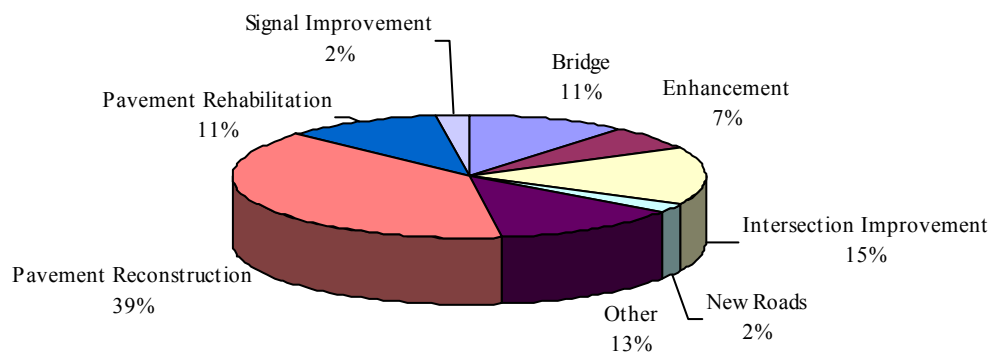
Some of the state funding sources include: State, Michigan Department of Transportation (MDOT), State of Michigan (M), and Bridge

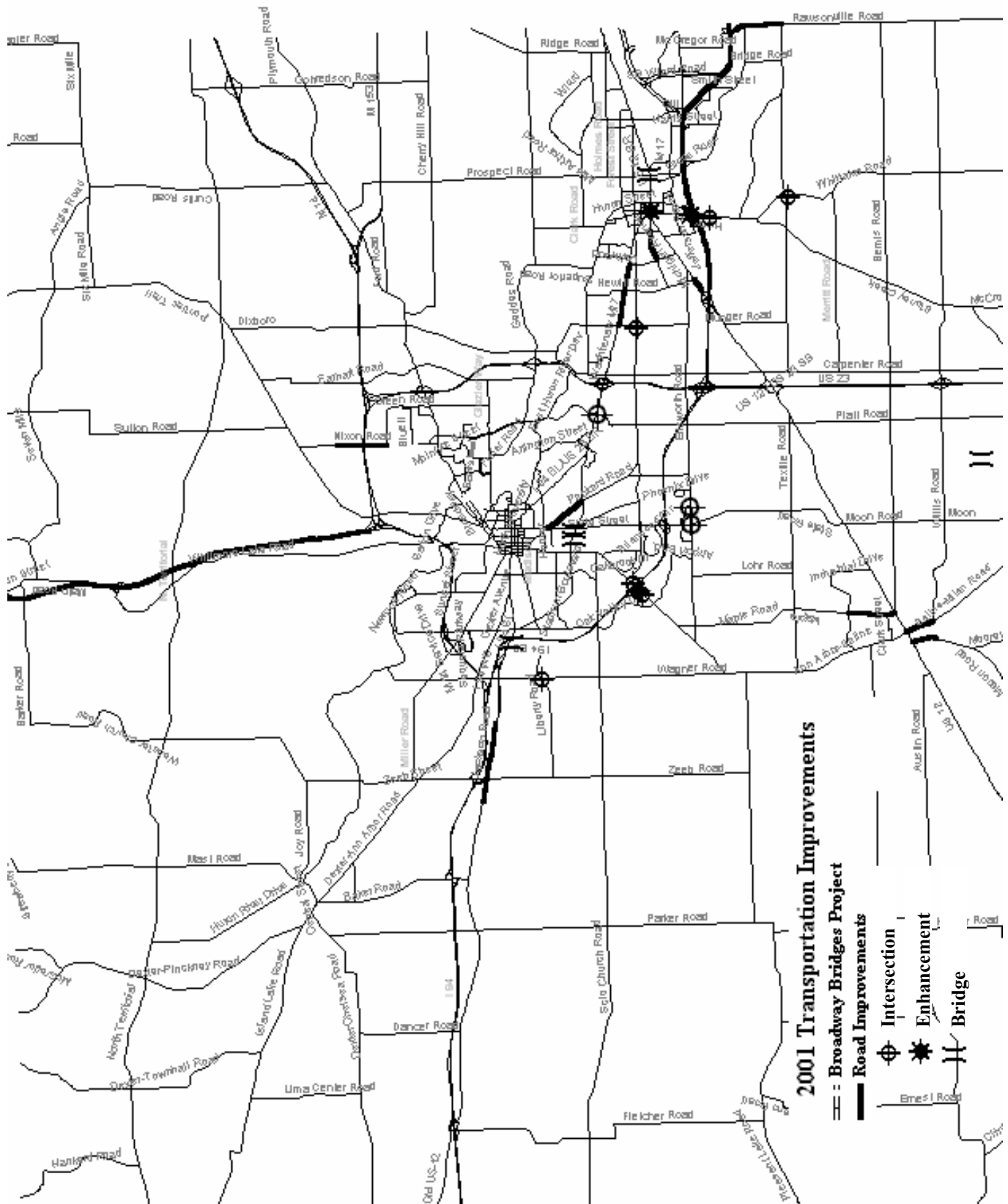
Some of the local funding sources include: Bond, Private, County Road Commissions (Wayne or Washtenaw (W) CRC), Developer, Downtown Development Authority (DDA), Township and City

In addition to the major construction projects occurring around the county this season there are some other projects worth noting. Below are the transportation-related projects and purchases for this year.

Project Location and Improvement	Agency	Estimated Start	Estimated Completion	Funding Source	Construction Cost
Crack Seal Project will include the application of crack seal to 3 miles of local and major streets by contractors to extend the life of the pavement. (Street Maintenance crews will do additional work, not yet determined, with their new crack seal machine.)	City of Ann Arbor	June	October	MTF	\$40,000
Surface Treatment Project will include the application of chip seal, slurry or microseal surface seals by contractors to 7.5 miles of selected local and major streets to extend the life of the pavement.	City of Ann Arbor	June	October	MTF	\$356,200
Raised Reflectors will be placed by contractors to 3 miles of selected streets.	City of Ann Arbor	June	October	MTF	\$75,000
Intersection Pavement Marking Project will include the application of permanent thermal plastic pavement markings by contractors to 60 selected intersections on local and major streets.	City of Ann Arbor	June	October	MTF	\$74,500
Major Street Long-Line Project will include 135 application miles of permanent thermal plastic pavement markings to be applied by contractors to selected major streets.	City of Ann Arbor	June	October	MTF	\$121,000
Pioneer High School Park & Ride Lot will be improved.	AATA	June	August	Federal, State	\$150,000

2001 Projects by Type





2001 Transportation Improvements

- == Broadway Bridges Project
- Road Improvements
- ⊕ Intersection
- ★ Enhancement
- ⌌ Bridge



Terri Blackmore named Director of UATS

After 22 years at UATS, Terri Blackmore has been chosen to succeed Robert Tetens as Director of UATS. Terri was first hired in 1979 as Administrative Research Coordinator and in 2000 advanced to Deputy Director which led the way to her current position as Director.

Terri graduated from Michigan State University in 1978 with a degree in Human Environment Design. Originally from Grand Rapids, after college, Terri moved to Ann Arbor to work at the Washtenaw County Drain Commissioner's Office. Terri was soon offered a position at UATS and has been with us (our agency) since.

With her years of experience, Terri is both extremely familiar with the day-to-day operations of the agency and unmatched in her knowledge of the transportation system in Washtenaw County. As Director of UATS, Terri will be more involved in the planning and public outreach process. She will represent the agency on Sustainable Washtenaw, the Chelsea Area Traffic Committee, the Greenways Advisory Committee, SEMCOG's Technical Advisory Committee as well as many other groups that focus on transportation issues.

When asked what she intends to change at UATS, Terri responded, "increase outreach and assistance to developing parts of the county."

UATS would also like to thank Bob Tetens for his many years of leadership and wish him good luck in his new role as the Director of Washtenaw County Parks & Recreation Commission.

Is Your Child Riding Safely?

As of March 10, 2000 all children under the age of four must be secured in a child-safety seat. According to the National Highway Traffic Safety Administration, approximately **eight out of every ten** child-safety seats are not used correctly.

A workshop is being offered to teach how to properly install your child-safety seat. This free workshop will be April 23, 2001 from 10 AM to 3 PM at the Washtenaw AAA Branch. Call now for an appointment 1-800-646-4222.

Upcoming Transportation Workshops and Conferences

Women's Transportation Seminar Committed to Changing the World

The Women's Transportation Seminar (WTS) proudly announces its Global Reach-Global Impact 2001 National Conference. Stressing the theme of Global Reach-Global Impact, the conference will change your perception of the future of transportation, the future of our economy, and the future of our country.

The WTS 2001 National Conference is May 16-18, 2001 in Long Island, California. For more information visit the WTS website www.wtsnational.org or call 202-496-4340.

National Edge City Conference

Join municipal government professionals, elected officials, and others, for "The Municipal Perspective," the first national conference to bring together Edge City representatives from throughout the U.S. to share successful ideas and explore the Edge City phenomenon.

General session topics, led by nationally-recognized experts, will include cutting edge architecture, e-commerce and its effect on Edge City economy, and the modes of transportation that improve accessibility to Edge Cities.

The National Edge City Conference is June 3-5, 2001 in Schaumburg, Illinois. The registration deadline is May 15, 2001. For more information contact 847/619-8285 or email lencarna@roosevelt.edu.

8th Annual Growing Communities Conference Places, Streets, and Community

Streets throughout the world are places of vibrant public life and the centers of communities and neighborhoods. This conference introduces innovations in street design as a way of growing better communities.

The Growing Communities Conference is June 13, 2001 in Grand Rapids, Michigan. Conference program and registration materials will be mailed in April. For more information contact Grand Valley Metro Council. Phone: 616-776-7608 Fax: 616-774-9292 Email: pmartin@gvmc.org

Ride Your Bike to Work!

Submitted by Jane Kent, City of Ann Arbor Bicycle Coordinator



The City of Ann Arbor Bicycle Program with the aid and support of the Bicycle Coordinating Committee, Chamber of Commerce,

and local merchants encourages everyone to ride their bikes to work during the annual Bike to Work Week, held this year from May 13 – 19. This event is part of the National Bike Month established by the League of American Bicyclists in an effort to encourage citizens to use bicycles to commute to work. Commuting by bike can improve your health, save money, reduce pollution, and relax your nervous system.

This year's lineup of promotions includes free coffee for bike commuters at select shops, prize raffles for participants, a Spinning Spoke Challenge for local companies, discounts on bike helmets and other merchandise at several area bike shops, and the chance to ride with members of the Ann Arbor City Council and the Chamber of Commerce. For more information on any of these events please contact the bike program at (734) 971-5471 or visit the Get Downtown website at www.getdowntown.org.

The Bicycle Program also offers free route mapping to individuals interested in knowing which roads are the best for bike commuting. Contact them with your start and

end points (include cross streets). Please allow five days for your request to be processed.

Moreover, to help long distance commuters, many parks in the City have been designated as Park-n-Ride lots. Drivers can park their cars at one of these City parks and ride their bikes to work from there. Additionally, for those cyclists that need to take the bus for part of their trip, the Ann Arbor Transportation Authority has installed bike racks on the front of their buses.

To get ready for a great season of bicycling, enroll in one of the Bike Program's maintenance clinics. These 2-hour clinics will teach basic bicycle repair skills. Sessions are scheduled for May 1, 3, 8, and 10 from 6:30 to 8:30 p.m. Space is limited, so pre-register by calling Great Lakes Cycling and Fitness at (734) 668-6484. The cost is \$5.00 per session.

Once your bicycle is ready to go, make sure that you are by joining the Ann Arbor Bicycle Touring Society on their Bike to Work Week Tune-Up Rides. The 12-mile rides will begin at Wheeler Park at 9:00 a.m. on May 6 and May 12. For more information check out their website at www.aabts.org.

For more information on the Bicycle Program or Bike to Work Week please call the Bicycle Program office at (734) 971-5471. The Washtenaw Bicycling and Walking Coalition will also have an information display at the Ann Arbor Farmer's Market on May 12 and 19 from 9 a.m. to 3 p.m.

Celebrate Earth Car Free Day!

The first-ever Earth Car Free Day is to be held this year on Thursday, April 19, 2001. Lead by The Commons and Earth Day Network, the goal is to spark and support events around the world: all based on the common theme of personal responsibility, citizen-based activism, and vital new public/private/community partnerships.

For The Commons and Earth Day Network, a Car Free Day is not a day in which all cars are pulled off all streets in all places. Rather it is, a day of open cooperative reflection on the problem of cars and traffic in cities, which also provides an occasion for people and communities to learn about and even try some alternative ways of getting around in a "car-lite" environment.

For more information on the Earth Car Free Day and ways to get involved visit their website at www.ecoplan.org/carfreeday/

S. Fifth Avenue
from Packard to Madison
S. First Street
from Liberty to William
S. Fourth Avenue
from Liberty to Washington
E. Jefferson
from Thompson to Maynard
John Street
from Fifth Ave. to Division St.
Lawrence Street
from N. Division St. to Ingalls
Monroe Court
from State westerly to the end
N. Thayer Street
from E. Kingsley to Catherine
Glen Avenue
from Huron to Catherine

Ann Arbor Downtown Street Resurfacing Projects

Thank-you-ma'am (n) - a bump or depression in a road

according to The American Heritage Dictionary (1982)

Member Agencies Recommend Projects for CMAQ Funding

The U.S. Department of Transportation conceived the Congestion Mitigation/Air Quality Projects (CMAQ) program to fund transportation-related projects that lead to a decrease in overall emissions. These projects include, but are not limited to: signalization and intersection improvements, new transit service start-up, replacement of older buses with cleaner-burning ones, ridesharing and community outreach activities. The following CMAQ projects were submitted to SEMCOG for Washtenaw County.

Traffic Signal Interconnection

- N. Prospect from Cross to Holmes (Ypsilanti)
- Stadium/Maple from Washtenaw to Miller (Ann Arbor)
- Packard from Stadium to Eisenhower (Ann Arbor)
- Congress from Michigan to Summit (Ypsilanti)

Intersection Improvements

- Dixboro Road at Huron River Drive (WC Road Commission)
- Dexter-Ann Arbor at Zeeb (WC Road Commission)
- Stony Creek Road at Whittaker Road (WC Road Commission)
- Dixboro Road at Geddes (WC Road Commission)
- US-23 at Plymouth Road (MDOT)

Transit Projects (all AATA)

- Continuation of Downtown Ann Arbor Trip Reduction Program
- Subscription Bus Service between Jackson and Westland
- Increase Transit Service

2001 Annual Street Resurfacing Project (City of Ann Arbor)

Street Name	From	To
Alhambra	Stadium	Sue Parkway
Barton Drive	Pontiac Trail	410N/Traver Road
Braeside Place	S. Seventh Street	Dead End
Brooklyn Avenue	Packard Street	Ferdon Road
Brooks Street	Robin	Pearl
Buckingham	Needham	Buckingham Court
Carolina Avenue	Winewood Avenue	Thaler Avenue
Cloverdale Road	Hilldale	End S. of Huron Parkway
Cloverdale Road	Skydale	End N. of Huron Parkway
Colgate	Loyola	End
Colony Road	298N/Packard	Packard Road
Coronada Drive	Sue Parkway	Alhambra Drive
Glazier Way	Fuller	Huron Parkway
Hasper Drive	N. Circle Drive	S. Circle Drive
Highland	Geddes	Lafayette
Hilldale	Skydale	End
Holyoke Lane	Newport Road	Lowell Road
Independence Blvd	Packard Street	Victoria Avenue
Indian River Place	Dead End	Riverview Drive
Island Drive	Maiden Lane	Island Drive Court
Koch Avenue	Third Street	S. Main Street
Larkspur	End	Cloverdale
La Salle Drive	La Fere	Lorraine Street
Londonderry Circle	Londonderry Drive	Dead End
Loyola	Pomona	End
Paisley Court	Dead End	Barrister Road
Park Lake Avenue	Lakeview	Lakewood
Pennsylvania (E-W)	Maple	Curve
Phoenix Drive	Varsity Drive	Varsity Drive
Prescott Avenue	Potter Avenue	W. Stadium Blvd
Redwood Avenue	Platt Road	Creek Road
Robin Road	Bydding Road	Fountain Street
Rosedale	Sharon	St Aubin
Sequoia Pkwy (WB)	Ravenwood Avenue	Center Drive
Skydale Drive	Hilldale Drive	Pontiac Trail
Spring	Miller	Sunset
Stellar Road	Manor Drive	Cloverdale Road
Sturbridge Court	Dead End	Bardstown Trail
Varsity Drive	E. Ellsworth Road	Phoenix Drive
Washtenaw Service Drive (East)	Pittsfield Blvd	Yost
Wilmot Court	Dead End	Elm Street
Winchell Drive	Brockman Blvd	St Francis Drive
Winewood Avenue	Carolina	Dead End
U of M Drive off Varsity	Varsity Drive	End of Curbs

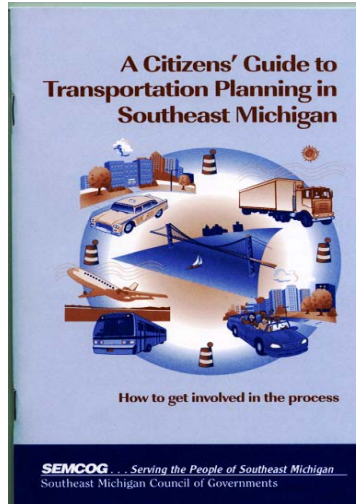
Get Involved in the Process!

In February 2001, SEMCOG, the Southeast Michigan Council of Governments (SEMCOG) published A Citizens' Guide to Transportation Planning in Southeast Michigan. This guide outlines the broad picture of regional transportation planning in Southeast Michigan. It describes the activities of SEMCOG and shows concerned citizens how they can participate in the transportation-planning process.

Visit UATS to pick up copies of the Citizens' Guide or call SEMCOG directly to request copies.

A related publication, also published by SEMCOG in February 2001, is People, Land, and Economic Activity in Southeast Michigan. SEMCOG is in the

process of creating a vision for public transit for Southeast



Michigan, a goal outlined in the *2025 Regional Transportation Plan for Southeast Michigan*. To support public involvement forums,

SEMCOG produced the 11 maps in this booklet. They show the spatial patterns of key factors related to design of a public transit system. Included are density maps of people, jobs, and transit-dependent populations. Other maps show current and future land use and locations of activity centers.

For more information on either publication contact:
Southeast Michigan Council of Governments (SEMCOG)
Information Services
535 Griswold Street, Suite 300
Detroit, MI 48226
phone: 313-961-4266
fax 313-961-4869
website: www.semco.org
email: comment2025rtp@semco.org

**Ann Arbor-Ypsilanti
Urban Area Transportation
Study Committee (UATS)
278 Collingwood
Ann Arbor, Michigan 48103-3810**

