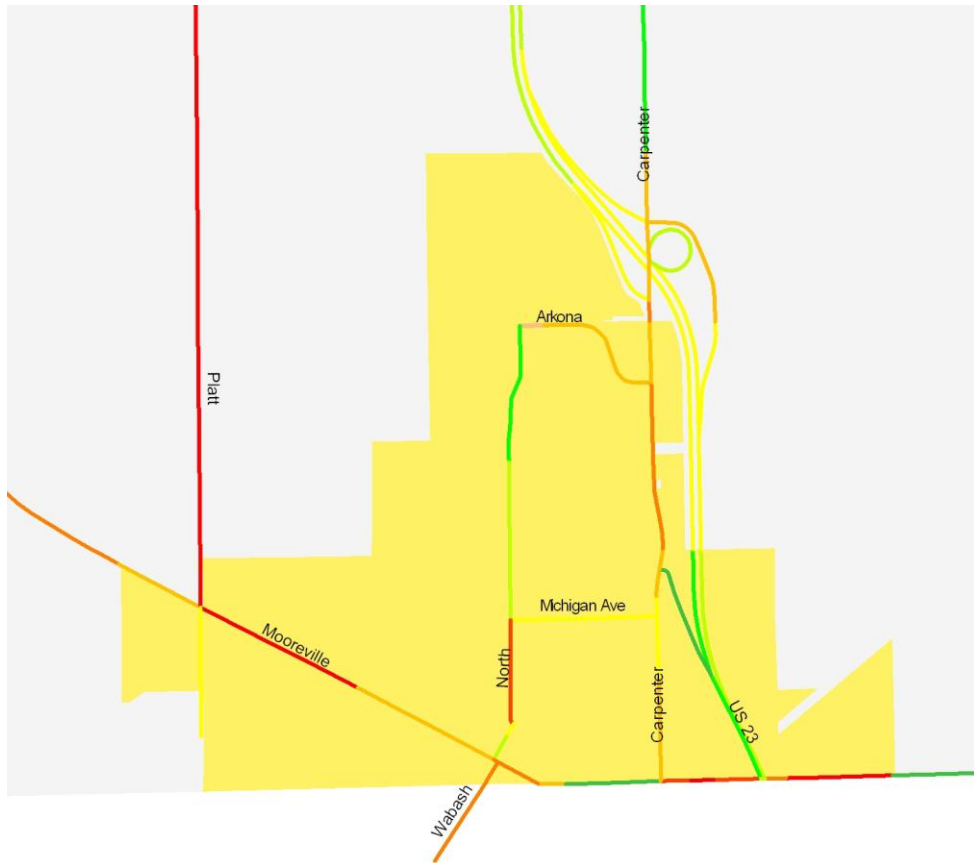


# Milan City (Partial) 2010 Asset Management Summary Sheet



Recommended Action		
Routine Maintenance	1.3	24.1%
Preventive Maintenance	2.5	45.5%
Structural Improvement	1.6	30.5%
<b>Total</b>	<b>5.4</b>	<b>100.0%</b>

PASER Rating		
Excellent (10,9)	.5	8.7%
Very Good (8)	.8	15.4%
Good (7,6)	1.7	32.0%
Fair (5,4)	1.3	24.2%
Poor (3)	.4	7.4%
Very Poor (2)	.7	12.4%
Failed (1)	-	0.0%
<b>Total</b>	<b>5.4</b>	<b>100.0%</b>

